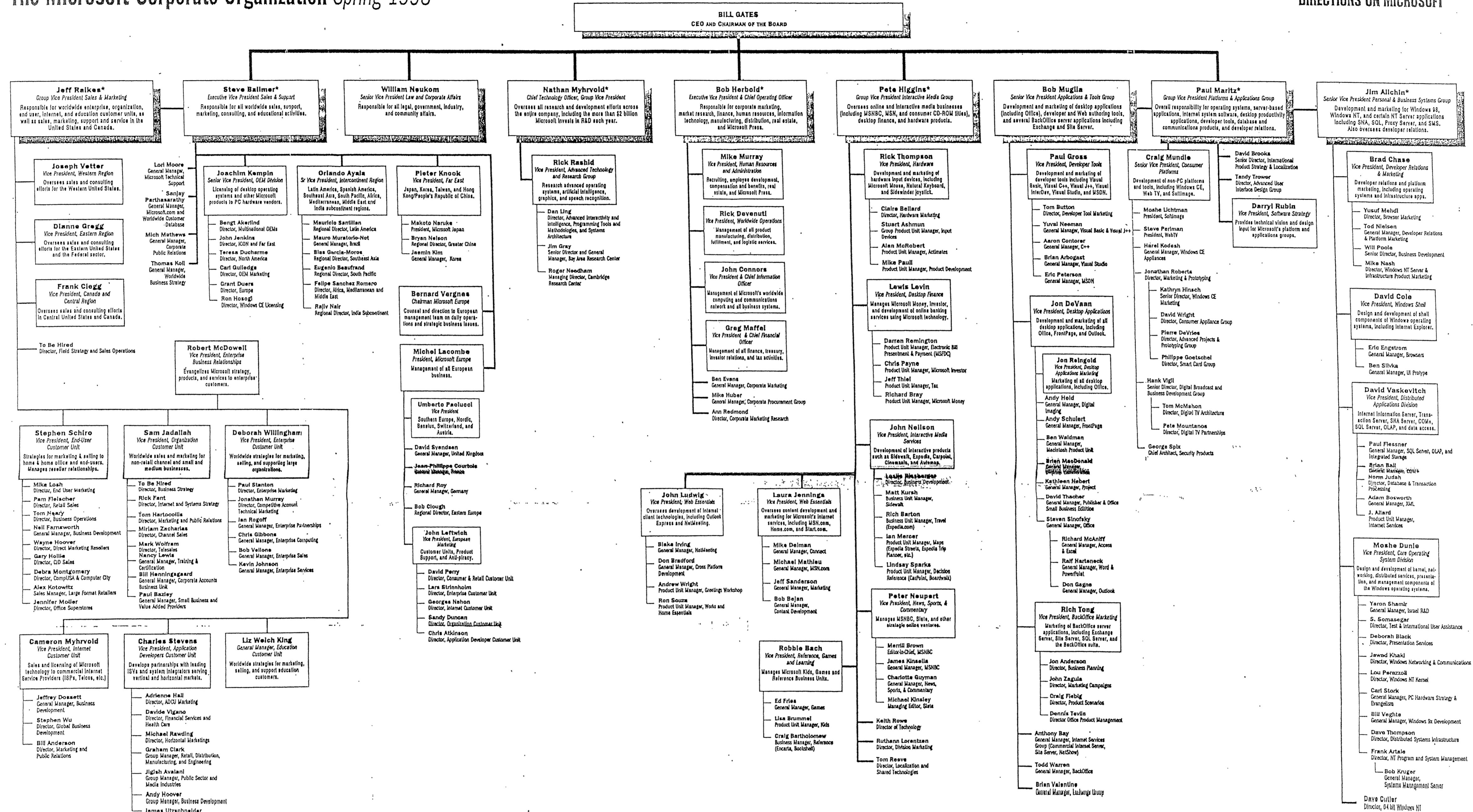


The Microsoft Corporate Organization Spring 1998

DIRECTIONS ON MICROSOFT



Copyright © Redmond Communications, Inc. Reproduction in whole or in part is prohibited. For reprint and subscription information call 425-882-5398.

Copyright © Redmond Communications, Inc. Reproduction in whole or in part is prohibited. For reprint and subscription information call 425-882-5398.

Copyright © Redmond Communications, Inc. Reproduction in whole or in part is prohibited. For reprint and subscription information call 425-882-5398.

* Member of the Executive Committee

Plaintiff's Exhibit
8828
Comes V. Microsoft

MS-PCIA 5108130
HIGHLY CONFIDENTIAL

MS-CC-MDL
000013