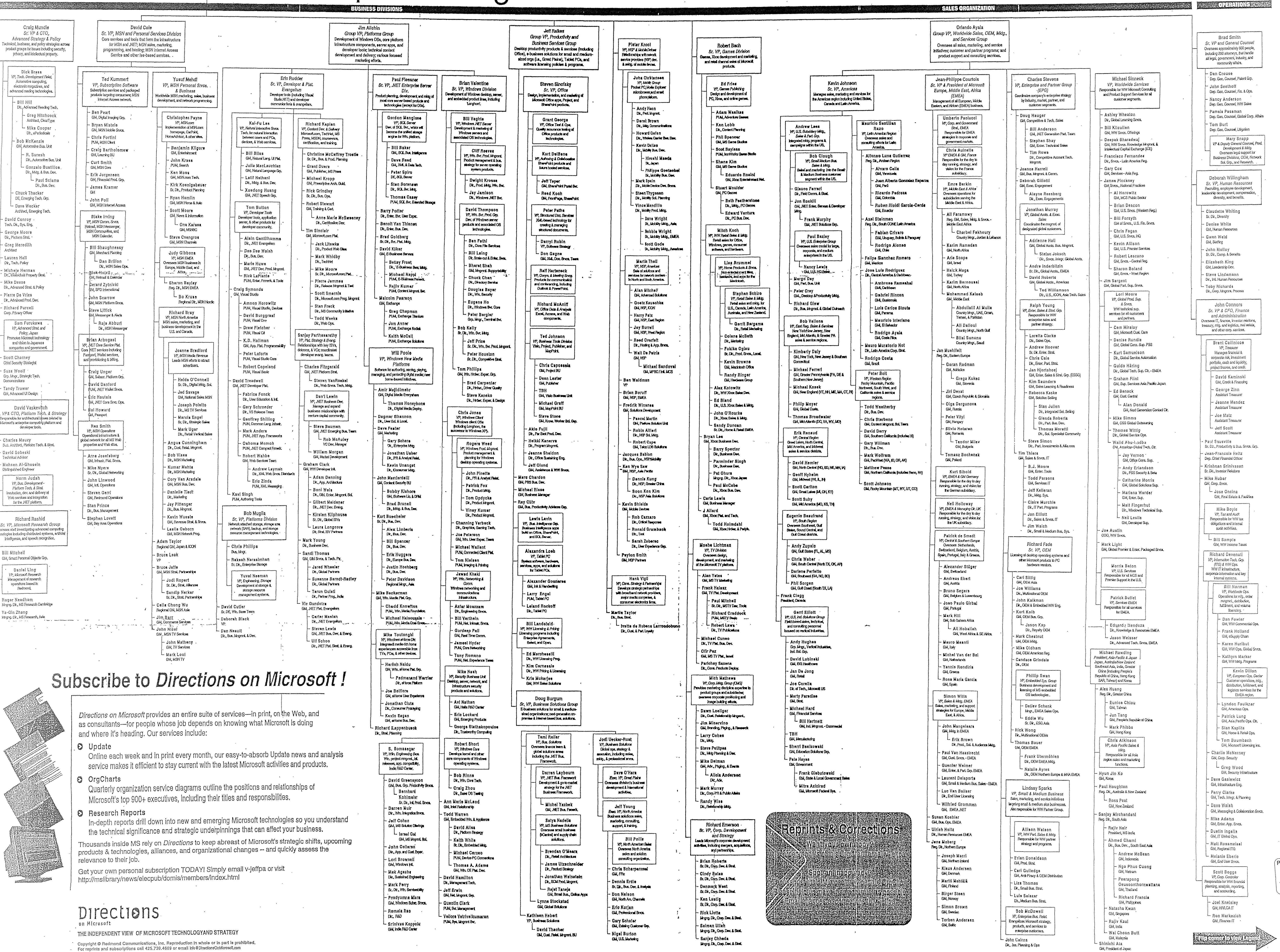


The Microsoft Corporate Organization

JULY 2002

Chairman and Chief Software Architect
Formulates company's overall technical strategy and reviews plans of all software development groups to ensure technical strategy with overall company strategy, meets with architectural design, technology across platform, impact of cross group dependencies, development schedules, and R&D funding requirements.

Steve Ballmer
Chief Exec. Officer (CEO)
Responsible for overseeing all product, sales, operations, consulting and support, administration, business development, and finance groups within the company.



Subscribe to Directions on Microsoft!

Directions on Microsoft provides an entire suite of services—in print, on the Web, and as consultants—for people whose job depends on knowing what Microsoft is doing and where it's heading. Our services include:

- Update**
Online each week and in print every month, our easy-to-absorb Update news and analysis service makes it efficient to stay current with the latest Microsoft activities and products.
- OrgCharts**
Quarterly organization service diagrams outline the positions and relationships of Microsoft's top 900+ executives, including their titles and responsibilities.
- Research Reports**
In-depth reports drill down into new and emerging Microsoft technologies so you understand the technical significance and strategic underpinnings that can affect your business.

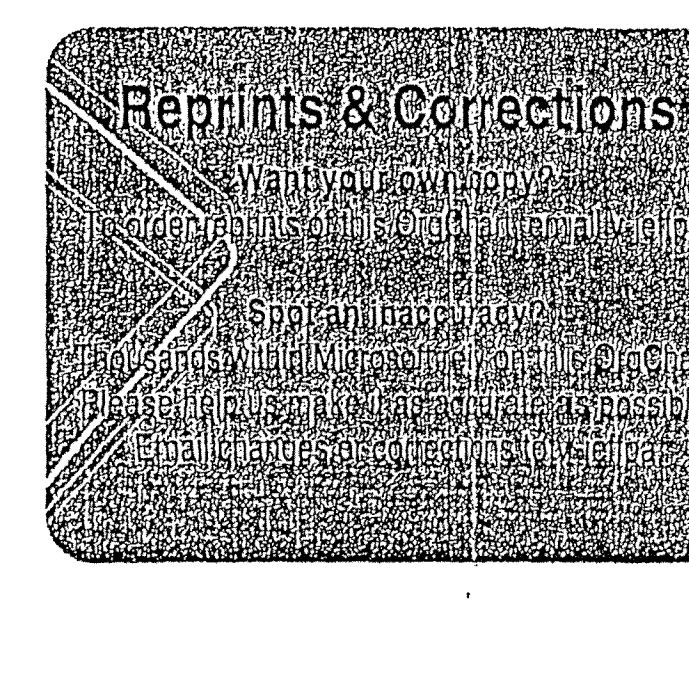
Thousands inside MS rely on Directions to keep abreast of Microsoft's strategic shifts, upcoming products & technologies, alliances, and organizational changes -- and quickly assess the relevance to their job.

Get your own personal subscription TODAY! Simply email vjefpa@msft.com or visit <http://mslibrary/news/elecpub/domis/members/index.html>

Directions
on Microsoft

THE INDEPENDENT VIEW OF MICROSOFT TECHNOLOGY AND STRATEGY

Copyright © Redmond Communications, Inc. Reproduction in whole or in part is prohibited. For reprints and subscriptions call 425.739.4568 or email info@directionsonmicrosoft.com



Plaintiff's Exhibit
8840
Comes V. Microsoft

MS-CAIA 5108139
HIGHLY CONFIDENTIAL
MS-CC-MDL
000002