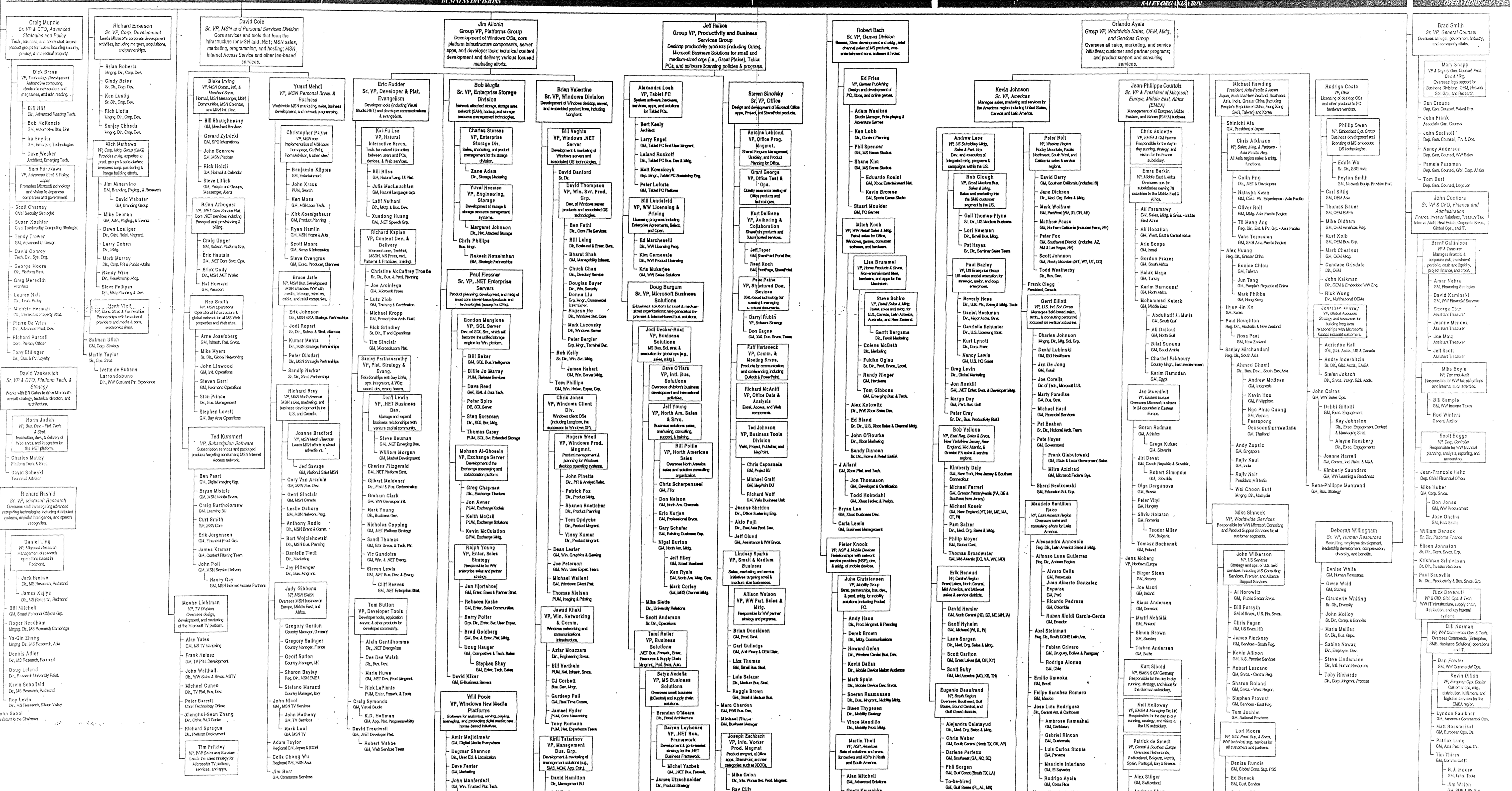
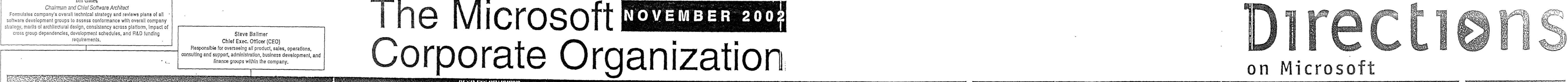


The Microsoft NOVEMBER 2002 Corporate Organization

Directions on Microsoft



Subscribe to Directions on Microsoft!

Directions on Microsoft provides an entire suite of services—in print, on the Web, and as consultants—for people whose job depends on knowing what Microsoft is doing and where it's heading. Our services include:

- Update**
Online each week and in print every month, our easy-to-absorb Update news and analysis service makes it efficient to stay current with the latest Microsoft activities and products.
- OrgCharts**
Quarterly organization service diagrams outline the positions and relationships of Microsoft's top 900+ executives, including their titles and responsibilities.
- Research Reports**
In-depth reports drill down into new and emerging Microsoft technologies so you understand the technical significance and strategic underpinnings that can affect your business.

Thousands inside MS rely on Directions to keep abreast of Microsoft's strategic shifts, upcoming products & technologies, alliances, and organizational changes – and quickly assess the relevance to their job.

Get your own personal subscription TODAY! Simply email v-jeffpa@msl.com or visit <http://mslibrary/news/elecpub/domis/members/index.html>

Reprints & Corrections

For more information on reprints and corrections, please contact:

Reprints: reprints@microsoft.com
Corrections: corrections@microsoft.com